

**5+**  
YEARS

# 12" Scooter

This scooter is to be assembled by an adult.

Check the contents and only remove the protective packaging from each item as and when it is to be fitted.

Please keep the packaging until you have completely assembled the scooter.

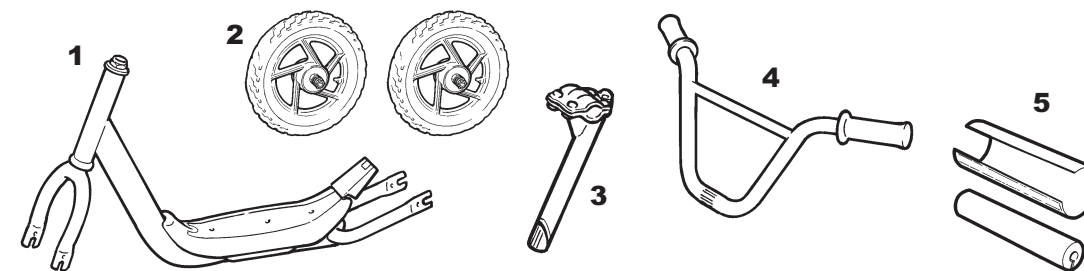
## TOOLS

The tools you need are a 13mm and 15mm spanner.



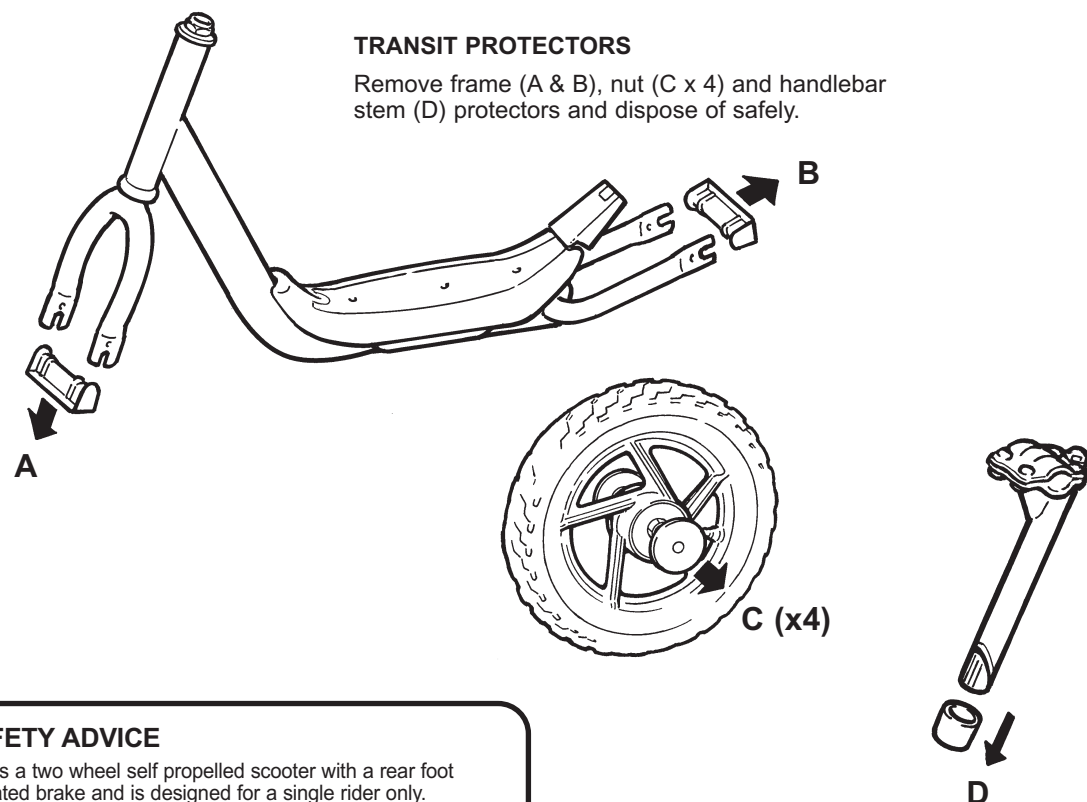
## CONTENTS:

1. Frame assembly comprising main frame, forks and platform with rear brake.
2. Front and rear wheels.
3. Handlebar stem
4. Handlebar
5. Handlebar pad



### TRANSIT PROTECTORS

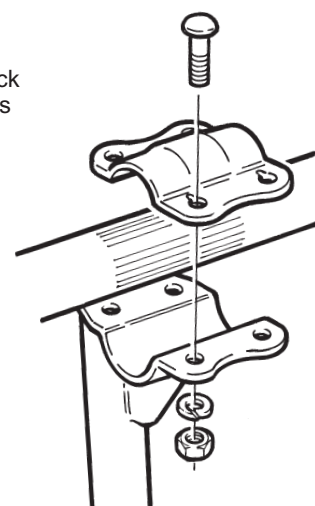
Remove frame (A & B), nut (C x 4) and handlebar stem (D) protectors and dispose of safely.



### FITTING THE HANDLEBAR STEM TO THE HANDLEBARS

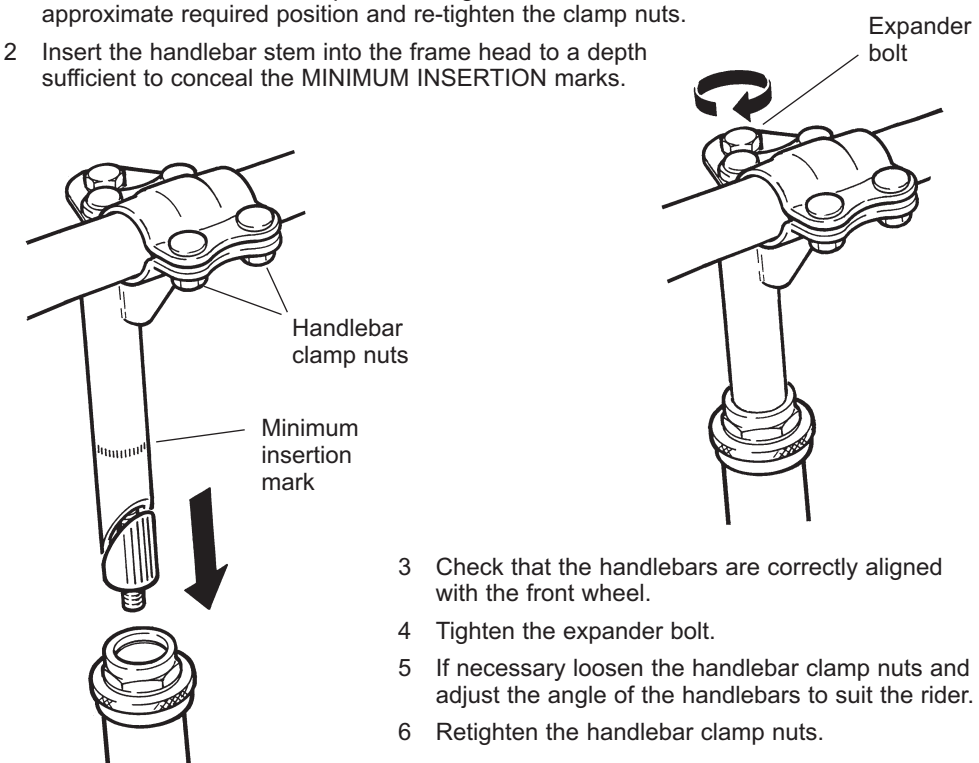
1. Remove the 4 nuts, washers and bolts from the handlebar clamp on the top of the stem.
2. Place the handle bars in the lower clamping plate.
3. Put the top clamping plate in position over the handlebars and refit the 4 securing screws, nuts and washers.
4. Centralise the handlebar and tighten all 4 nuts evenly, ensuring that the locating lugs on the underside of the heads of the bolts are located in the recesses in the holes in the top plate.

**NOTE:**  
It will be necessary to check the angle of the handlebars when assembly is fitted into the frame.



### FITTING THE HANDLEBAR ASSEMBLY

1. Loosen the handlebar clamp nuts, swing the stem to its approximate required position and re-tighten the clamp nuts.
2. Insert the handlebar stem into the frame head to a depth sufficient to conceal the MINIMUM INSERTION marks.



3. Check that the handlebars are correctly aligned with the front wheel.
4. Tighten the expander bolt.
5. If necessary loosen the handlebar clamp nuts and adjust the angle of the handlebars to suit the rider.
6. Retighten the handlebar clamp nuts.

### SAFETY ADVICE

This is a two wheel self propelled scooter with a rear foot operated brake and is designed for a single rider only. It is not recommended for riders over 20kgs.

It is not intended or equipped for road use, off road use, racing, jumping, stunt riding or use with any motorised device.

### NOTE:

It should never be ridden by more than one person at a time. Never ride at night, obey all traffic and pedestrian regulations, and give right of way to pedestrians.

Care should be taken when riding on wet pavements as braking action and wheel traction may be reduced.

Never leave your scooter unlocked and unattended.

### FOR YOUR CHILD'S SAFETY

Recheck that all screws, nuts and bolts are firmly tightened. Make sure that your child is capable of riding this scooter. Do not allow your child to ride unsupervised.

### SCOPE AND LIMITED WARRANTY

This warranty does not cover damage or loss from accidents, normal wear, improper assembly or adjustment, jumping, stunt riding, racing or competition, abuse, neglect or when used with any motorised device.

DISTRIBUTED BY



Please retain this leaflet for reference to the manufacturer. Made in China to European Safety Standards.



The CE mark denotes compliance with the standards laid down by the EC (European Community).

**MV SPORTS & LEISURE LTD**  
35 Tameside Drive  
Castle Bromwich • Birmingham  
B35 7AG • UK  
Email: info@mvsports.com  
www.mvsports.com

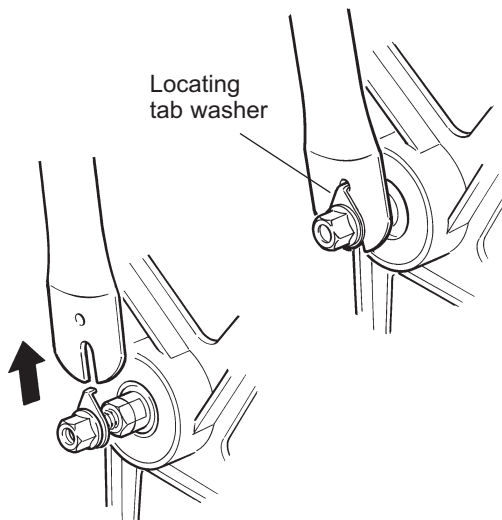
### CUSTOMER HELPLINE (UK ONLY) 0870 8404255

We make every effort to ensure that this product reaches you in satisfactory condition.

However if you have any queries, need assistance, or find this product defective, please call our Customer Helpline.

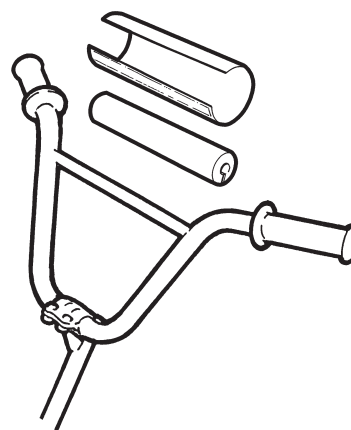
### FITTING FRONT AND REAR WHEELS

1. Loosen the wheel nuts sufficiently to allow the tabbed locating washers to fit outside the forks.
2. Insert the wheels into the forks, sliding the wheel spindles into the slots in the forks.
3. Ensure that the locating washer tabs are inserted into the locating holes in the forks.
4. Check that the wheel rims are central between the forks and tighten the wheel nuts.



### ATTACHING THE HANDLEBAR PAD

1. Push foam insert for handlebar pad centrally onto handlebar crossbar.
2. Wrap cover around, securing with velcro.



**NOTE:**  
Please check all nuts, bolts and fittings are secure before giving to your child.



08.03 - ISSUE 2

### A GUIDE TO SAFE CYCLING & SCOOTERING

1. We recommend this scooter is for pavement use only.
2. Do not ride at night. Visibility is often limited at dawn and dusk.
3. Always give pedestrians right-of-way, and don't ride too close to them. Never park your bicycle or scooter where it can cause a nuisance.
4. Avoid hazards that may cause you to lose control of your bicycle or scooter such as pot holes, uneven pavements and manhole covers.
5. Leave plenty of room when passing parked vehicles and watch out for doors being opened in your path.
6. Remember that braking distance should be increased in wet weather, and regular checks of brakes, steering and lighting should be made.
7. Never carry passengers on your bicycle or scooter. Never carry packages in your hands while riding, or fix anything to your bicycle or scooter that could obstruct your visibility or control.
8. Don't wear anything that restricts your hearing.
9. Always ride with both hands on the handlebars.
10. Don't wear very loose clothing, which could hang down and become caught in the wheels. Wear cuff bands or trouser clips to keep your trousers from getting caught in the chainwheel.
11. We recommend that light-coloured or fluorescent clothing be worn which helps others to see you in daylight and poor light.
12. **WARNING!** Protective equipment should be worn. We recommend a helmet, long-sleeved shirt, long trousers, shoes, elbow pads and knee pads. Gloves and eye protection also make good sense. Cover your handlebars, stem and top tube with safety pads for extra protection.
13. Don't ride your bicycle if the chain cover is not attached.

Please refer to the Highway Code regarding rules for cyclists