

**3+**  
YEARS

# Sound Around Tri-Scooter

This tri-scooter is to be assembled by an adult.

Check the contents and only remove the protective packaging from each item as and when it is to be fitted.

Please keep the packaging until you have completely assembled the scooter.

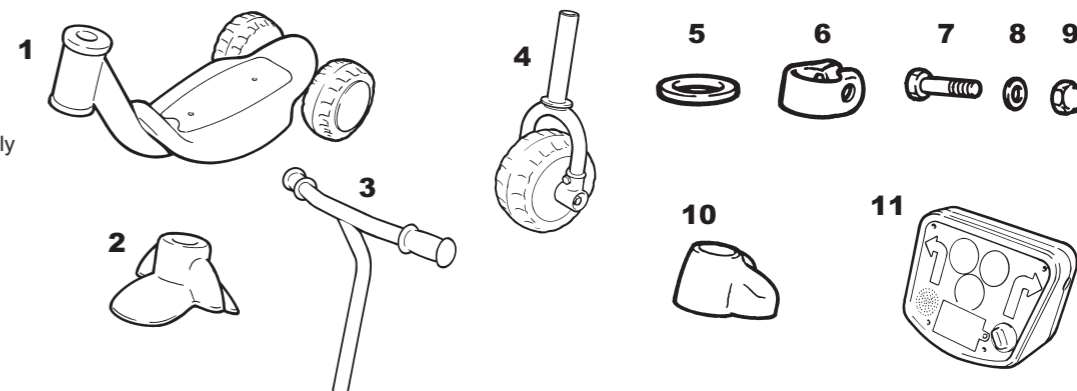
## TOOLS

The required  
Spanner 14mm (not supplied)  
Screwdriver (not supplied)



## CONTENTS:

- 1 Frame assembly
- 2 Mudguard
- 3 Handlebars
- 4 Front wheel and fork assembly
- 5 Plastic washer
- 6 Clamp
- 7 Clamp bolt
- 8 Washer
- 9 Domed nut
- 10 Protective cover
- 11 Sound unit



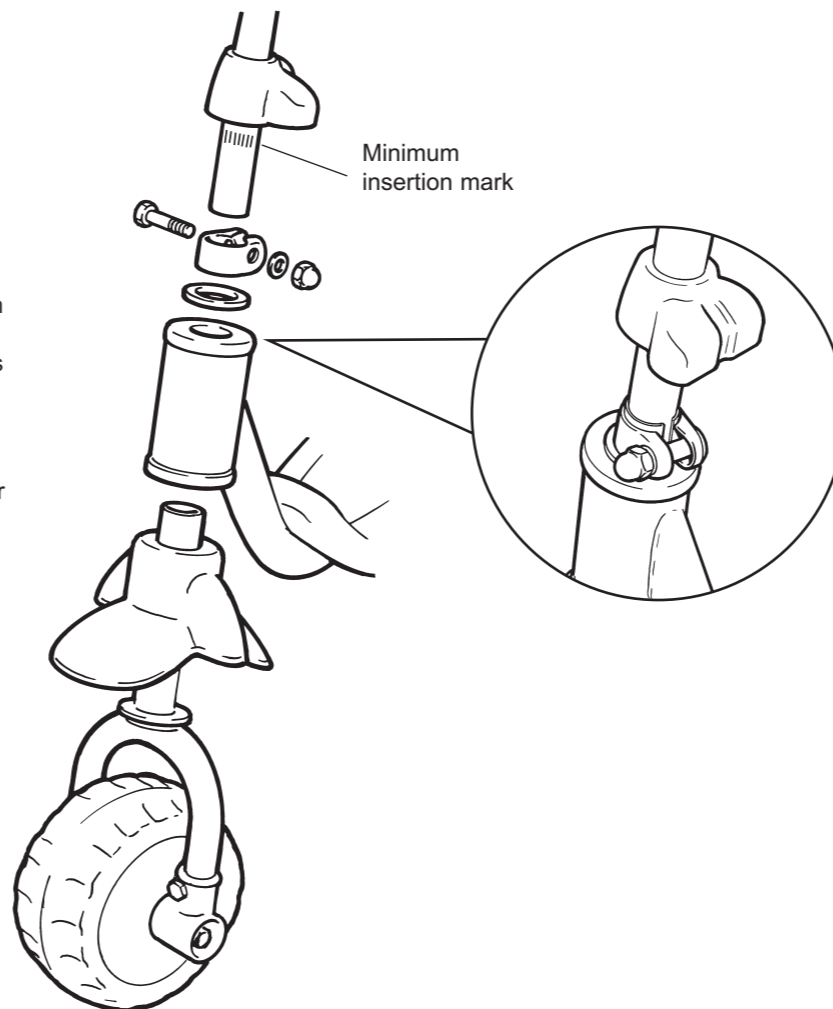
### PROTECTIVE PACKAGING

- 1 Remove the protective caps from the handlebar stem and front fork stem.



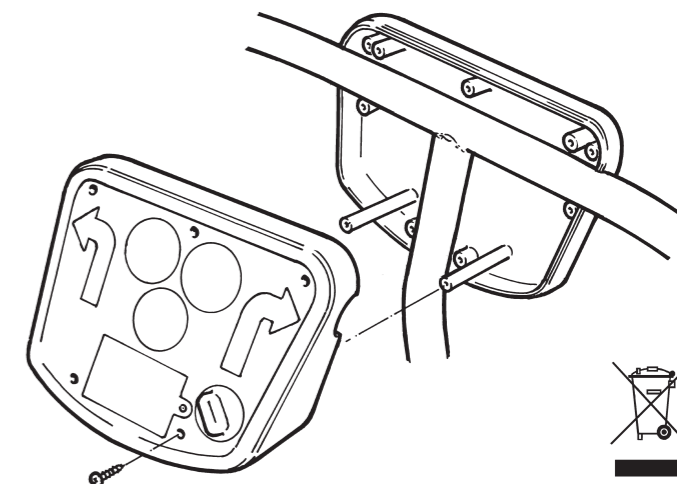
### ASSEMBLING THE SCOOTER

- 1 Slide the mudguard over the front fork assembly.
- 2 Insert the front fork stem into the main frame head, making sure the slot in the stem is facing rearward.
- 3 Slide the plastic washer over the end of the front fork stem, followed by the clamp.
- 4 Insert the clamp bolt through the holes in the clamp. Ensure that the locating lug on the underside of the bolt head locates in the slot in the hole.
- 5 Fit the washer and nut onto the end of the screw.
- 6 Slide protective cover onto the handlebar stem.
- 7 Insert the handlebar stem into the fork stem to the desired position, ensuring that the minimum insertion mark is not visible, align with the front wheel and tighten the clamp.
- 8 Slide the protective cover down over the clamp.



### ASSEMBLING THE SOUND UNIT

- 1 Remove the five screws securing the two halves of the unit
- 3 Position the back plate on the handlebars.
- 4 Place the front of the unit in position and secure with the five retaining screws.



### FOR YOUR CHILD'S SAFETY

Recheck that all screws, nuts and bolts are firmly tightened. Make sure that your child is capable of riding this tri-scooter.

Do not allow your child to ride without supervision.

Please check regularly that everything is securely tightened, especially the handlebars and wheel axle nuts. Also check that the grips have not deteriorated. Failure to carry out these maintenance and checks, could lead to component failure and consequently to a possible accident.

**WARNING:** Protective equipment should be worn.

Not for children with a body weight of more than 20kg

Not suitable for children under 36 months due to small parts.

Please retain this leaflet for reference to the manufacturer. Carefully made in China to European Safety Standards.

**CE** This mark denotes compliance with the standards laid down by the EC (European Community).

### CUSTOMER HELPLINE

We make every effort to ensure that this product reaches you in satisfactory condition.

However if you have any queries, need assistance, or find this product defective, please call our Customer Helpline:

**0870 8404255 (UK ONLY)**

DISTRIBUTED BY

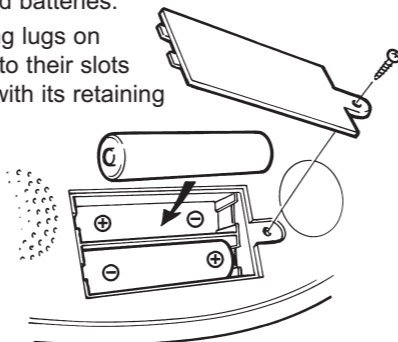


MV SPORTS & LEISURE LTD

35 Tameside Drive • Castle Bromwich • Birmingham • B35 7AG • UK  
Email: info@mvsports.co.uk

### REPLACING THE BATTERIES

- 1 Unscrew the battery cover retaining screw and remove cover.
- 2 Remove the old batteries and replace with the new batteries ensuring that the polarity is correct. Do not mix new and old batteries.
- 3 Locate the two retaining lugs on the end of the cover into their slots and secure the cover with its retaining screw.



### BATTERY CARE INFORMATION

The batteries must be installed / replaced by an adult only. Rechargeable batteries are to be removed from the product before being charged.

Rechargeable batteries are only to be charged under adult supervision.

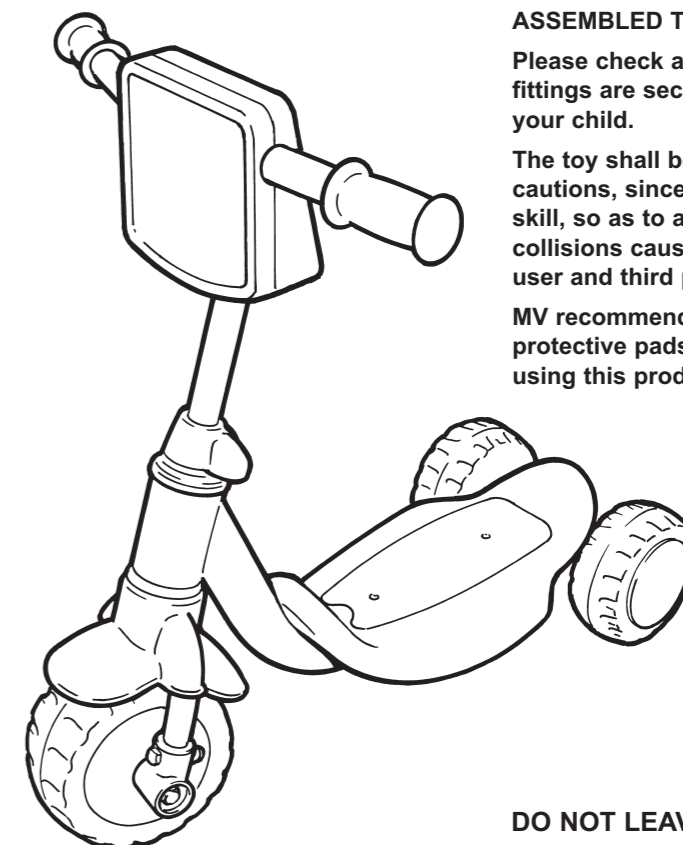
Different types of batteries or new and used batteries are not to be mixed.

Only batteries of the same or equivalent type as recommended are to be used.

Batteries are to be inserted with the correct polarity. Exhausted batteries are to be removed from the unit.

The supply terminals are not to be short-circuited.

Do not attempt to recharge non-rechargeable batteries.



### ASSEMBLED TRISCOOTER

Please check all screws and fittings are secure before giving to your child.

The toy shall be used with cautions, since it requires great skill, so as to avoid falls or collisions causing injury to the user and third parties.

MV recommends the use of protective pads and helmet when using this product.

**DO NOT LEAVE OUTSIDE**